

2009 NIVS Coalition Award Recipient:  
**Maryland Partnership for  
Prevention, Inc.**

Tiffany A. Tate, MHS  
National Influenza Vaccine Summit  
June 29, 2009

## What is MPP?



- 501c3 organization
- Adult immunization coalition for Maryland
- Parent organization of Maryland's childhood immunization coalition
- Supporter of preventive health efforts in Maryland

## MPP's Flu Season Activities

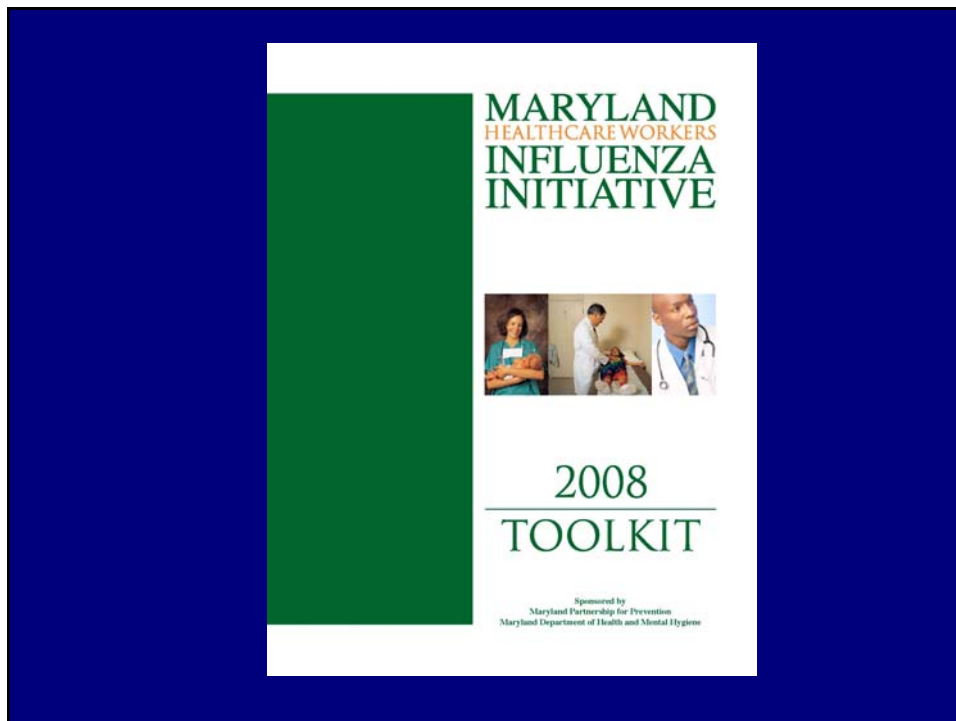
- Maryland Healthcare Workers Influenza Initiative
- "Gift of Prevention" Campaign
- Extended Season Vaccination Mini-Grants
- Assessment of Local Health Departments
- Flu Season Wrap-Up Meeting
- "What's New With Flu" Teleconference

## MPP's Flu Season Activities

- Maryland Healthcare Workers Influenza Initiative
- "Gift of Prevention" Campaign
- Extended Season Vaccination Mini-Grants
- Assessment of Local Health Departments
- Flu Season Wrap-Up Meeting
- "What's New With Flu" Teleconference

## HCW Influenza Initiative

- Co-sponsored by Maryland DHMH
- Partner with professional assns. to recruit participants, “Registered Partners”
- Registered Partners:
  - Complete baseline and wrap-up surveys
  - Eligible for \$1,000 grant
  - Receive toolkit, resources, and incentives
  - Receive updates through monthly newsletter
- Wrap-Up Meeting and Awards Ceremony
- **Vaccinated >14,000 HCWs under '08-'09 initiative**



## HCW Toolkit Contents



- Resources & Strategies
- ACIP Recommendations
- COMAR Regulations
- Standing Orders
- Vaccine Information Statements
- Vaccine Administration Records and Consent Forms
- Document Templates


## Other Resources



## Other Resources

[http://edcp.org/html/hcw\\_initiative.cfm](http://edcp.org/html/hcw_initiative.cfm)

Office of Epidemiology and Disease Control Programs - Maryland Department of Health Page 1 of 3



**2008 Maryland Health Care Workers Influenza Initiative**

**What is the Maryland Health Care Workers Influenza Initiative?**

An initiative that aims to raise influenza vaccination rates among health care workers by providing resources to support facility-wide employee influenza vaccination campaigns and increasing immunization occurrence in health care facilities.

[Click here](#) to take the Health Care Workers Influenza Initiative Survey

**Who should participate?**

Facilities, organizations, and community providers of health care with an interest in increasing influenza vaccination rates among their employees to protect them from getting the flu and passing it on to their clients, co-workers and families. This may include, but is not limited to:

- Hospitals
- Local health departments
- Child care facilities
- Private physicians' offices
- Home Health Nursing Agencies
- Senior housing
- Adult day care services
- Continuing care retirement communities
- Any provider of health care services and or staff who serve persons at risk from complications of influenza.

**What types of resources will be provided through this initiative?**

Participants in the Maryland Health Care Workers Influenza Initiative will have access to educational and promotional resources to support their efforts to increase influenza immunization rates of their staff. Registered Partners of the initiative will be eligible to receive grants for up to \$1,000 to help fund their campaign.

**How do I become a Registered Partner of the Initiative?**

[http://edcp.org/html/hcw\\_initiative.cfm](http://edcp.org/html/hcw_initiative.cfm) 4/1/2009

## “Gift of Prevention” Campaign

- **Goal:** To promote extended-season influenza vaccinations.
- Provides “gift cards” to members for employees, clients, and the community
- 2008-2009 Season: MPP distributed 10,000 GOP cards to members and large employers
- Countless number distributed by partners



## Other Flu Season Activities

- Collect and compile data for Maryland Flu Season Annual Report
- Host Maryland Flu Season Wrap-Up
- Provide mini-grants to members to support extended-season efforts
- “What’s New With Flu” statewide conference call to kick off flu season



## Acknowledgements

Maryland DHMH Center for Immunization

National Influenza Vaccine Summit



**Tiffany Tate**

Maryland Partnership for  
Prevention

[tiffany.tate@immunizemaryland.org](mailto:tiffany.tate@immunizemaryland.org)

410-902-4677